

Welcome to Fifth Grade

What Does A Typical Day in Fifth Grade Look Like?

8:50 - 9:05	Opening
9:05 - 10:05	Related Arts
10:05 - 11:20	Math
11:20 - 12:05	Language Arts
12:05 - 12:35 12:35 - 1:05	Lunch Recess
1:05 - 2:05	Language Arts
2:05 - 3:05 3:10 - 3:15	Content Dismissal



Related Arts

Art: Mrs. Hoskins
Mrs. Frankfurth

Music: Mrs. Rinaldi
Mrs. Phelps

Media: Ms. Flynn
Mrs. Haavik
Ms. Williams

PE: Mrs. Peksa
Ms. Holocker

Technology: Mrs. Williams
Mrs. Patel





Math

Students solved math tasks in small groups during the first four days of class for teachers to observe their problem-solving skills. All students are placed in appropriate math classes.

Important points to remember regarding your math student:

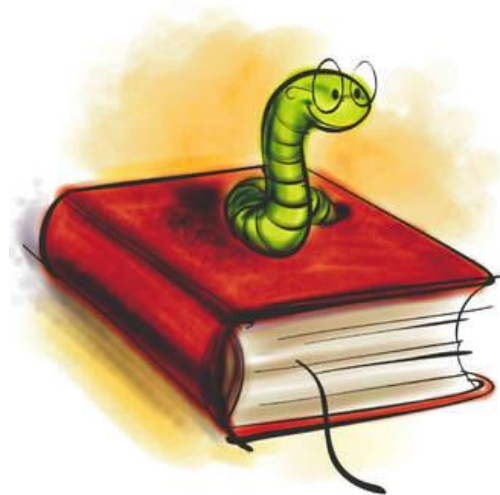
- Mistakes are opportunities for learning and growth
- Ask questions in class for understanding
- Accuracy is more important than speed – take your time!
- Everyone can learn math
- Cooperative/positive interaction during group activities is essential for success

Be involved in your child's learning by:

- Checking your child's math journal
- Using HCPSS websites and CANVAS for additional resources
- Contacting your child's math teacher with concerns or questions

Reading

- ▶ Reading all genres
- ▶ Independent Daily Reading (IDR) -
First 14 lessons introduce the requirements of reading and responding independently
- ▶ Reader response journals -
Students respond to their reading
- ▶ In addition to IDR, students will read other books/materials. Student groupings will be determined by their needs in each standard.
- ▶ Reading nightly at home is encouraged. Have a conversation with your child about what he/she is reading at home or in school.



Writing Program “Being a Writer”



- ▶ New writing program provided by the county
- ▶ Units of Study:
 - ▶ The Writing Community
 - ▶ The Writing Process
 - ▶ Personal Narrative
 - ▶ Fiction

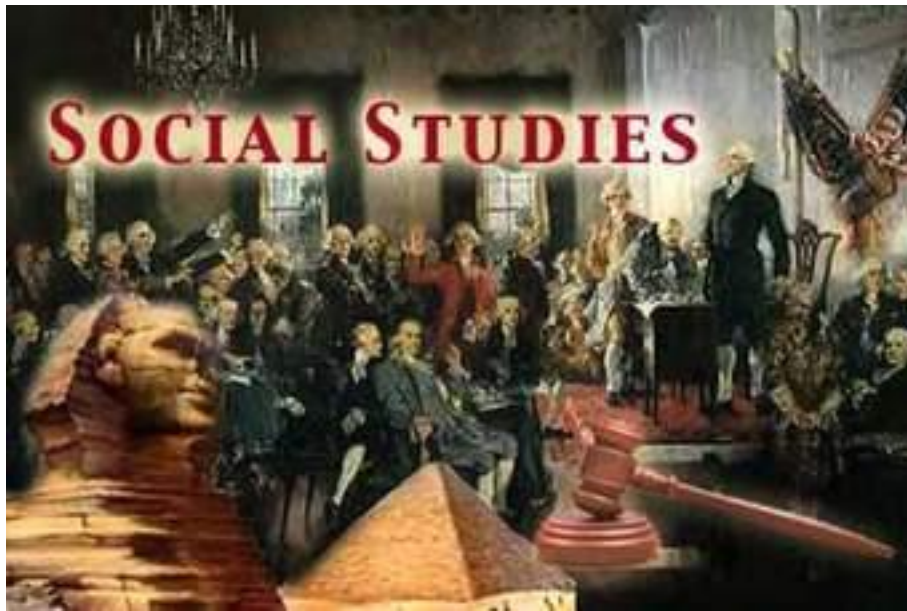
First 14 days are introductory lessons - Students learn how to jot down ideas, write, share, and reflect on their pieces

- ▶ Lessons include a read aloud and author study
- ▶ Vocabulary is embedded in the program

Science

- ❖ Journals go home Monday – Parent reviews completed lessons, graded work, and teacher comments from week before with his/her child; parent signs the Signature Sheet located in the back of the journal. Journals are checked on Tuesday.
- ❖ Please encourage and reinforce positive behaviors for working in a group.
- ❖ Grades include:
 - ❖ Science journal lesson reflections, observations, and data collection
 - ❖ Participation in group activities and classroom discussions





Units of Study:

- ❖ American Revolution
- ❖ Building a New Nation
- ❖ Challenges of a New Nation
- ❖ We the People - Simulated Congressional Hearing (SCH) included in this unit

How Can I Support my Child at Home?

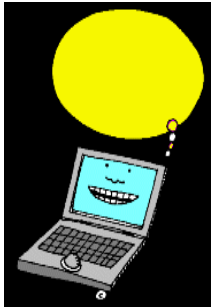


- Familiarize yourself with the big ideas/topics being taught in 5th grade to prompt discussion at home
- *Ask your child to “prove it” by providing examples/explanations to support his/her thinking
- *Encourage further learning (library, websites, community resources)
- *Visit the HCPSS website for additional parent and student resources
- *CANVAS

Communication



- ✓ **Progress Reports**
- ✓ **Thursday folders**
- ✓ **Take home folders with graded assignments**
- ✓ **Agenda books**
- ✓ **Conferences**
- ✓ **Report Cards**
- ✓ **E-mail (please allow 24 hours for a response)**
- ✓ **Notes**
- ✓ **Phone calls (please call front office with time sensitive requests)**
- ✓ **Fifth grade team/individual teacher Canvas pages**



Fifth Grade Team Email Addresses

margaret_lewis@hcpss.org (Team Leader)

bonnie_kaczorowski@hcpss.org

melissa_martin@hcpss.org

alison_sorkin@hcpss.org

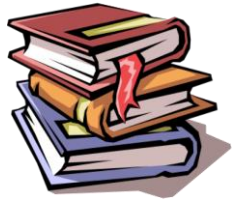
ginger_thomas@hcpss.org

deborah_ostericher@hcpss.org (Paraprofessional)

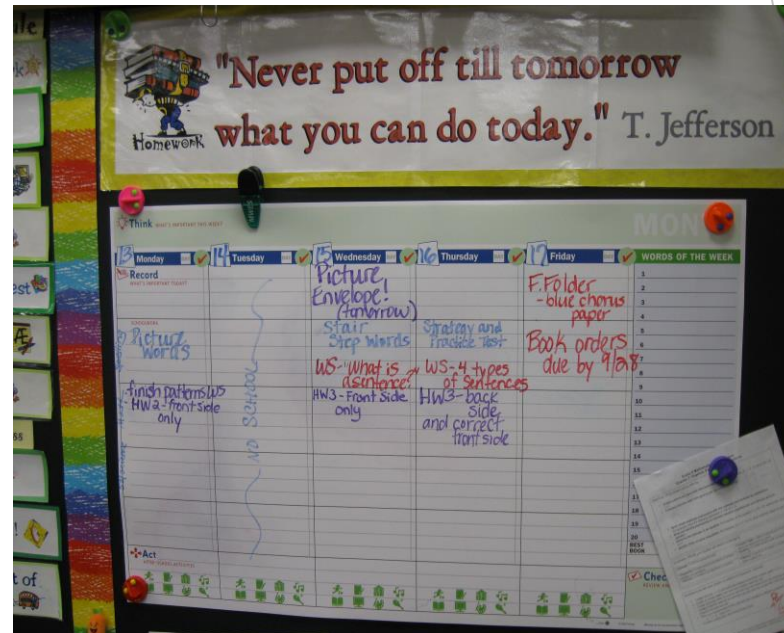
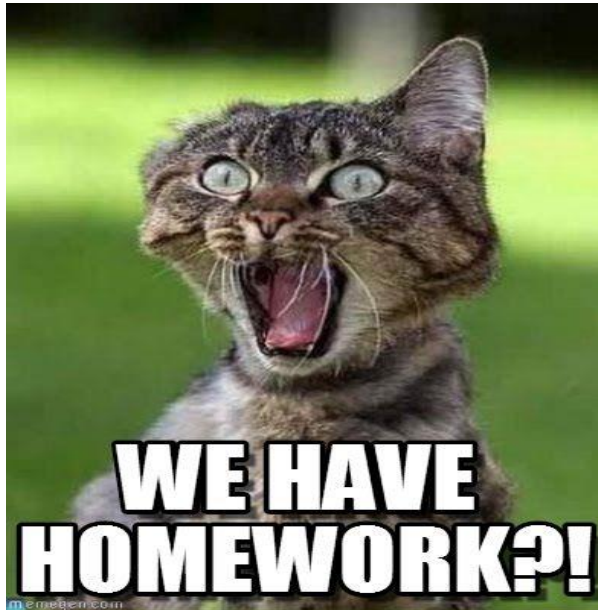
kimberly_broadhurst@hcpss.org (GT Math)

amy_parker@hcpss.org (GT Math)

jill_napolitano@hcpss.org (Special Ed.)



Homework/Absences



****Any homework assignments are written on a classroom calendar for students to record in their agenda books. To support your child's learning at home, please check the agenda book.**

Procedures for Absences

Late Assignments

Possible consequences could include:

- ▶ Grade lowered each day assignment is late
- ▶ Automatic zero if more than one week beyond its due date
- ▶ Reflection form
- ▶ Phone call home





- ▶ Purchasing t-shirts -information went home. For your convenience, you can purchase online. Not mandatory.
- ▶ Philadelphia extended day field trip date is 10/25
- ▶ MAP testing dates are 10/1, 10/2, 10/15, 10/18
- ▶ New media book check-out process

Band/Orchestra/Chorus

Ms Kalivretenos, Band
Mrs. Zeitler, Orchestra
Ms. Lahan, .5 Orchestra
Mrs. Rinaldi, Chorus



Instrumental instruction takes place twice a week. Band, chorus, and orchestra begin 9/24.

❖ **One 60-minute full band/strings rehearsal on Tuesdays, 2:05 - 3:05 and one thirty-minute class period**

❖ **Chorus will take place once a week for 45 minutes on Mondays, 11:20 – 12:05**



**STUDENTS ARE RESPONSIBLE FOR
MAKING UP WORK MISSED DURING THE 30-MINUTE
LESSON!**

Volunteers

Volunteers are requested throughout the year as needed for:

- Field trips
- Special team events such as: Gingerbread houses, SCH, and fifth grade picnic)
- Other general team needs



Each class is in need of a homeroom parent. Please contact your child's homeroom teacher if you are interested. Thank you!

Volunteer Training

- In order to create a consistent process for training parent volunteers assisting with any school-based activity and/or field trips, a brief training module and certificate of completion have been created. Parent volunteers must complete the training and submit the certificate to their child's homeroom teacher before volunteering.
- For your convenience, we are taking a few minutes this evening to fulfill this requirement.
- <http://www.hcpss.org/parents/volunteer-information>

Positive Behavioral Interventions and Supports (PBIS)

- The staff of Manor Woods Elementary continues to focus on working with students and their families to promote positive behavior in all school settings.
- Three school goals that are reinforced daily:



Be Respectful
Be Responsible
Be Ready

PBIS continued

Students are taught the school rules for classroom and non-classroom settings. Using the PBIS model, children are consistently praised for positive behavior.

If a student does not follow one of the three school rules, the following procedures are in place:

1. A staff member will remind the student about appropriate, expected behavior.
2. A *Reflection Form* will be completed by the student and a copy will be sent home for classroom managed behavior situations. Parents return the signed form the following day.
3. A *Minor Incident Report* (MIR) will be completed by the teacher/staff member and sent home for office managed behavior situations.



Questions

