



Manor Woods Elementary School

Important Information 2019-2020

Home of "Manny" the Mighty Duck

Carol DeBord, Principal
carol_debord@hcpss.org

Jennifer Zinn, Assistant Principal
jennifer_zinn@hcpss.org

11575 Frederick Road Ellicott City, MD 21042

Phone: 410-313-7165 Fax: 410-313-7170

School Start and Dismissal Times: 8:45 a.m. - 3:15 p.m.

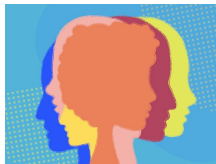


HCPSS Vision: Every student and staff member embraces diversity and possesses the skills, knowledge and confidence to positively influence the larger community.

HCPSS Mission: HCPSS ensures academic success and social-emotional well-being for each student in an inclusive and nurturing environment that closes opportunity gaps. More Information: <https://www.hcpss.org/scta/>

Important Communication Links/Resources:

- Check your child's Thursday folder.
- HCPSS Website: <https://www.hcpss.org/>
- Manor Woods Website: <https://mwes.hcpss.org/>
- Email and texts will be sent to the contact information in your Family File. Update your family file EACH YEAR. <https://www.hcpss.org/connect/>
- Follow us on twitter @ hcpss_mwes
- School closing and delay information on the above links or through the hotline 410-313-6666
- As always, you can contact MWES staff via email or phone. Please allow 24-48 hours to return emails/calls.



Mental Health and Student Supports at MWES

School Counselor: Monica Heinlein, monica_heinlein@hcpss.org

School Psychologists: Craig Cooper, craig_cooper@hcpss.org and Jenny Manning, jennifer_matlack@hcpss.org

Pupil Personnel Worker: Jeanne Smith, jeanine_smith@hcpss.org

ESOL Support: Unjung Shin, unjung_shin@hcpss.org and Moon Kim, mkim1@hcpss.org

Special Education ITL: Jennifer Silbaugh, jennifer_silbaugh@hcpss.org

Reading Specialist: Natalie Miskimins, natalie_miskimins@hcpss.org

Parent Teacher Association (PTA)

Your involvement with the PTA will benefit everyone, but the greatest reward is seeing the smile on your child's face when you are involved in his or her world. Please consider joining our PTA. Visit our website often for information on how to be involved <http://www.mwespta.org/>



Elementary Report Card Changes for 2019-2020

Beginning this year, changes to Learning Behaviors will be made to your child's report card to provide greater insights to parents/guardians. Detailed information about these changes can be found at <https://www.hcpss.org/academics/learning-behaviors/>



Assessments

- Measures of Academic Progress (MAP) - Grades 1 through 5
- MCAP/PARCC Assessments - Grades 3, 4, and 5
- Cognitive Abilities Test (CogAT) - Grades 3 and 5
- Maryland Integrated Science Assessment (MISA) - Grade 5
- Kindergarten Readiness Assessment - Kindergarten
- Access - ELL students

Questions? Contact Mrs. Zinn

Interactive School Menus

- HCPSS students and their families can now view menus and nutrition and allergen information for meals served in all HCPSS schools through [Nutrislice](#), a website and free smartphone app.
- Parents may prepay for student meals by setting up an online account at myschoolbucks.com. There is a \$2.49 processing fee for each transaction. Each transaction can be up to \$120.00 in total.
- Students from households that meet federal income guidelines are eligible to receive free or reduced-price meals. Those eligible for reduced-price meals pay \$0.30 for breakfast and \$0.40 for lunch. To apply visit: <https://www.hcpss.org/food-services/farms/>
- Student prices: Breakfast \$2.00, Lunch \$2.75, Milk \$0.50



What will my child learn?

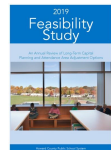
“What Your Child Will Learn” guides provide an overview of the instructional program for your child’s grade, as well as student goals and expectations. The guides include information to help parents monitor and support their child’s progress during the school year. Individual guides are provided for each grade level. The guide identifies the content covered in each curriculum area, categorized by subject, e.g., Language Arts, Science, etc. Find the guides online in Canvas. (The guides are available online only; print versions are no longer distributed.) Access Canvas through [HCPSS Connect](#).

Technology Use in School

HCPSS permits students to bring personal technology devices to school for instructional or personal use, under the discretion of school administrators and teachers. Students will never be required or expected to bring a personal device to school. When an instructional activity is planned that needs access to individual technology, devices will be provided for use by students who do not have their own technology. At Manor Woods, we ask that if your child brings a device to school that it remains off an in backpacks at all times. To learn more about student and parent expectations visit <https://www.hcpss.org/byod/frequently-asked-questions/>

Boundary Review Process

- Potentially impacting MWES for the 2020-2021 School Year
- Board Public Hearing in September
- Full Information can be found at <https://www.hcpss.org/school-planning/boundary-review/>



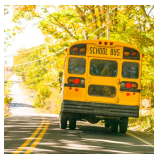
Health Room

Cluster Nurse: Judy Bruce, judith_bruce@hcpss.org
Health Assistant: Lynnette Winde, lynnette_winde@hcpss.org
Health Room Phone: 410-313-8326

Please make sure your immunizations are up to date and you provide this information to the health room. If your child needs medication, you must communicate this need to our health room and complete the necessary paperwork.



Transportation



- Information about your child’s bus assignments can be found by logging on to [HCPSS Connect](#). You may also visit the [HCPSS school bus locator](#). Bus times vary the first week. The children should follow their year long procedure beginning the first day. Bands will be placed on backpacks on the first day of school. Please keep these bands on your child’s backpack for at least the first week of school. Throughout the school year, students are only permitted to ride their assigned bus.
- Car riders should not enter the doors in the morning until the morning bell rings. Children should **remain in their cars** until the bell rings at 8:30. Car riders are dismissed first in the afternoon. Please do not get out of your car in the loop for any reason or to assist your child. A staff member can assist as needed. Please do not pass others. Remember to be courteous.

Important Safety Reminders

- Emergency Information is collected online through the Family File. Please list contacts other than parents and update this information throughout the year as needed. We must have the most current information in the event of an emergency.
- Photo ID is always required if you are visiting school or picking up your child early.
- If your child arrives late to school, you must walk in and sign your child in.
- A written note must be given to your child’s teacher after every absence.
- In the event of an emergency, there is a system-wide plan. Please do not call the school. Communication will be sent via email when necessary.